

# byKAN

ELEVATOR

*bykanelevator.com*

2024

**Ürün Kataloğu**  
Product Catalogue

*daha fazlası için*



# İÇİNDEKİLER

## CONTENTS

<b>About Us</b> <i>Hakkımızda</i>	02-03
<b>Cabins</b> <i>Kabinler</i>	04-19
<b>Other Elevators</b> <i>Diğer Asansörler</i>	20-25
<b>Floor Options</b> <i>Taban Seçenekleri</i>	26-27
<b>Glass and MDF Coating</b> <i>Cam ve MDF Kaplama</i>	28-29
<b>Ceiling Options</b> <i>Tavan Seçenekleri</i>	30-31
<b>Decostyle Stainless</b> <i>Dekoratif Paslanmaz</i>	32-33
<b>Control Panels</b> <i>Kumanda Panoları</i>	34-37
<b>Automatic Doors</b> <i>Otomatik Kapılar</i>	38-39
<b>Manual Doors</b> <i>Çarpma Kapılar</i>	40
<b>Car Frame &amp; Counter Weight Frame</b> <b>Machine Frame</b> <i>Süspansiyon ve Şaseler</i>	41
<b>Machine Engine</b> <i>Makine Motor</i>	42-43
<b>Buttons</b> <i>Butonlar</i>	44-45
<b>Elevator Equipments</b> <i>Asansör Ekipmanları</i>	46-47



# ÇITAYI YÜKSELT!

*Raise the level!*



## Hakkımızda

2021 yılında kurulan firmamız komple asansör sistemleri ve parçalarının üretimi ve satışını yapan, asansör sektöründe Türkiye'nin lider firmalarındandır. Türkiye'nin 81 iline geniş bir ürün ve hizmet ağı oluşturan firmamız, son yıllarda gücünü ve tecrübesini kullanarak ihracat yaptığı ülke sayısını 28 e çıkartmıştır.

Türkiye'nin sanayi ve üretim merkezi Konya'da 2.000 m2 fabrikamızda asansör kabinleri, kontrol sistemleri, yarı ve tam otomatik kapılar ile tüm mekanik asansör aksamlarını üretmekteyiz. Ürünlerimizi Avrupa Standartları ( CE ), Rusya Standartları ( EAC ) ve Ukrayna Standartlarına göre üretmekte ve belgelendirmekteyiz.

Firmamız kaliteyi ön planda tutarak; asansör sektöründe üretim yapan birçok yerli, yabancı ve Avrupalı markanın satışını yapmaktadır.

Dünya teknolojisindeki gelişmeleri gün be gün takip eden firmamız, genç, dinamik ve bilgili ekibi ve müşteri odaklı hizmet anlayışı ile geleceğe sağlam adımlar atarak sektörde yerini almaya devam edecektir.

Dünya Standartlarında Kaliteyi ve Teknolojiyi Birleştirdik. Ülkemizde ve dünyadaki gelişmeleri sürekli takip eden genç ve dinamik kadromuz ile teknolojik gelişimi ve yeniliği hedefleyen firmamız, müşteri odaklı hizmet anlayışı ile geçmişin ışığı altında geleceğe sağlam adımlar atarak sektörde ilk ihracatını yapmıştır.

## About Us

Founded in 2021, our company is one of Turkey's leading companies in the elevator industry, producing and selling complete elevator systems and parts. Our company, which has created a wide product and service network in 81 provinces of Turkey, has increased the number of countries it exports to 28 by using its power and experience in recent years.

We produce elevator cabins, control systems, semi- and fully automatic doors and all mechanical elevator parts in our 2,000 m2 factory in Konya, Turkey's industrial and production center. We produce and certify our products according to European Standards (CE), Russian Standards (EAC) and Ukrainian Standards.

Our company prioritizes quality; It sells many local, foreign and European brands that produce in the elevator industry.

Our company, which follows the developments in world technology day by day, will continue to take its place in the sector by taking firm steps into the future with its young, dynamic and knowledgeable team and customer-oriented service approach.

World Class Quality and We Combined Technology. Our company, which aims at technological development and innovation with our young and dynamic staff who constantly follow the developments in our country and in the world, has made its first export in the sector by taking firm steps into the future under the light of the past with its customer-oriented service approach.



# Misyonumuz

## Our Mission

Dünyanın en büyük firmalarından biri olma yolunda yorulmadan ilerleyen firmamızın misyonunu şu şekilde tanımlıyoruz; Yapılan çalışmalar ve sunulan hizmetler sırasında her daim sevecen ve samimi davranmak, müşteriler ile olan ikili ilişkileri dürüstlük ve karşılıklı güven çerçevesinde ele almak Her türlü iş esnasında sorun çözücü düşünce ile reaksiyon göstermek, bu anlamda duyarlı davranmak, çevre bilincine sahip olmak, bu kapsamda gereken hamleleri gerçekleştirmek Şirket içi eğitimler düzenleyerek yöneticilerinden çalışanlarına kadar herkesin gerekli eğitimleri almasını sağlamak, daha fonksiyonel bir yapıya bürünmek için bu tarz eğitimleri sürekli hale getirmek Ani gelişen ihtiyaçlarda ya da gereksinimlerin birden ortaya çıktığı anlarda atık davranıp müşteri taleplerini karşılamak, çözüm önerileri ile müşteri memnuniyeti sağlamak ve müşterilere zaman kazandırmak Etkin ve üretici hamleler ile gerek sahada satış yaparken, gerek teknik destek verirken pratik çözümler sunabilmek.

We define the mission of our company, which is tirelessly advancing towards becoming one of the largest companies in the world, as follows; To always act in a caring and sincere manner during the work carried out and the services provided, and to handle bilateral relations with customers within the framework of honesty and mutual trust. Reacting with problem-solving thinking during all kinds of work, acting sensitively in this sense, having environmental awareness, and taking the necessary steps in this context. Organizing in-company trainings to ensure that everyone, from managers to employees, receives the necessary training, and to make such trainings permanent in order to have a more functional structure. Acting quickly and meeting customer demands in case of sudden needs or when requirements arise suddenly, providing customer satisfaction with solution suggestions and saving time for customers. To be able to offer practical solutions with effective and productive moves, both when selling in the field and when providing technical support.

# Vizyonumuz

## Our Vision

Sektöründeki geniş tecrübesi ile müşterilerine uzun yıllardır hizmet veren firmamız, güler yüzlü ve kaliteli hizmet anlayışını sürdürmeye devam etmektedir. Firmamızın bu doğrultuda sahip olduğu kültürü; Asansör denildiğinde sektöründe ilk akla gelen çözüm üretici firma olmak, tüm dünya firmalarına örnek olmak, Dünyanın en geniş ihracat ağına sahip olmak ve ülkemizi de bu alanda gururla temsil etmek, Sektördeki üretim methodlarına ve ürün çeşitliliğine yenilikler getirmek, Tüm asansör türlerinde müşterilerinin ihtiyaçların eksiksiz bir şekilde karşılamak, Satış sırasında ve sonrasında müşterilerimize hızlı ve eksiksiz bir hizmet sunarak, anlık ihtiyaçları karşılayarak muhtemelen sorunlara çözüm üretmek.

Sektöründeki geniş tecrübesi ile müşterilerine uzun yıllardır hizmet veren firmamız, güler yüzlü ve kaliteli hizmet anlayışını sürdürmeye devam etmektedir. Firmamızın bu doğrultuda sahip olduğu kültürü; Asansör denildiğinde sektöründe ilk akla gelen çözüm üretici firma olmak, tüm dünya firmalarına örnek olmak, Dünyanın en geniş ihracat ağına sahip olmak ve ülkemizi de bu alanda gururla temsil etmek, Sektördeki üretim methodlarına ve ürün çeşitliliğine yenilikler getirmek, Tüm asansör türlerinde müşterilerinin ihtiyaçların eksiksiz bir şekilde karşılamak, Satış sırasında ve sonrasında müşterilerimize hızlı ve eksiksiz bir hizmet sunarak, anlık ihtiyaçları karşılayarak muhtemelen sorunlara çözüm üretmek.

Our company, which has been serving its customers for many years with its extensive experience in the sector, continues to maintain its friendly and quality service approach. The culture of our company in this direction; When it comes to elevators, the first solution that comes to mind in the sector is to be a manufacturer and to be an example to all companies around the world, To have the world's largest export network and to proudly represent our country in this field, To bring innovations to production methods and product diversity in the sector, To fully meet the needs of its customers in all elevator types, To provide a fast and complete service to our customers during and after sales, meeting instant needs and possibly finding solutions to problems.







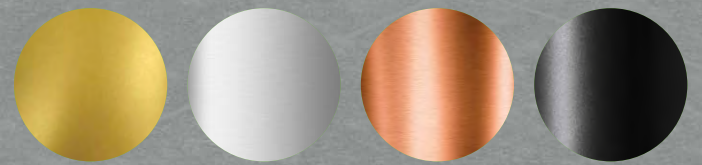
## KN-01

### Özellikler

TR	<b>Arka Duvar</b>	: Yarım boy ayna
	<b>Tavan</b>	: Lazer kesim paslanmaz
	<b>Taban</b>	: Star galaxy granit
	<b>Aksesuarlar</b>	: Ayna paslanmaz
	<b>Yan Duvar</b>	: Satine paslanmaz

### Properties

EN	<b>Back Wall</b>	: Half length mirror
	<b>Ceiling</b>	: Laser cutting stainless
	<b>Floor</b>	: Star galaxy granite
	<b>Accessories</b>	: Mirror stainless
	<b>Side Wall</b>	: Hairline stainless steel

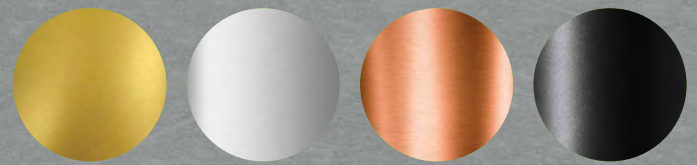


**byKAN**  
ELEVATOR





## KN-02



### Özellikler

TR	<b>Arka Duvar</b>	: Tam boy ayna
	<b>Tavan</b>	: Lazer kesim paslanmaz
	<b>Taban</b>	: PVC
	<b>Aksesuarlar</b>	: Ayna paslanmaz
	<b>Yan Duvar</b>	: Satine paslanmaz

### Properties

EN	<b>Back Wall</b>	: Full length mirror
	<b>Ceiling</b>	: Laser cutting stainless
	<b>Floor</b>	: PVC
	<b>Accessories</b>	: Mirror stainless
	<b>Side Wall</b>	: Hairline stainless steel

**byKAN**  
ELEVATOR





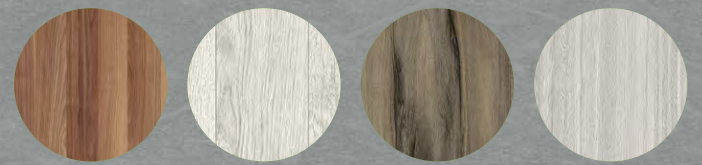
## KN-03

### Özellikler

TR	<b>Arka Duvar</b>	: Yarım boy ayna
	<b>Tavan</b>	: Lazer kesim paslanmaz
	<b>Taban</b>	: PVC
	<b>Aksesuarlar</b>	: Bakır paslanmaz
	<b>Yan Duvar</b>	: Lamine kaplama

### Properties

EN	<b>Back Wall</b>	: Half length mirror
	<b>Ceiling</b>	: Laser cutting stainless
	<b>Floor</b>	: PVC
	<b>Accessories</b>	: Copper stainless
	<b>Side Wall</b>	: Laminate coating

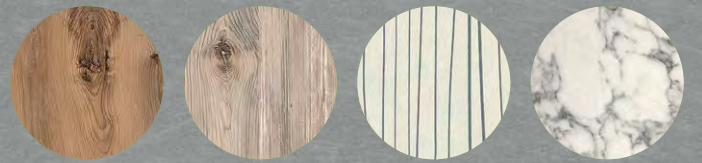


**byKAN**  
ELEVATOR





## KN-04



### Özellikler

TR	<b>Arka Duvar</b> : Yarım boy ayna
	<b>Tavan</b> : Lazer kesim paslanmaz
	<b>Taban</b> : PVC
	<b>Aksesuarlar</b> : Bakır paslanmaz
	<b>Yan Duvar</b> : Lamine Kaplama

### Properties

EN	<b>Back Wall</b> : Half length mirror
	<b>Ceiling</b> : Laser cutting stainless
	<b>Floor</b> : PVC
	<b>Accessories</b> : Copper stainless
	<b>Side Wall</b> : Lamine coating

**byKAN**  
ELEVATOR





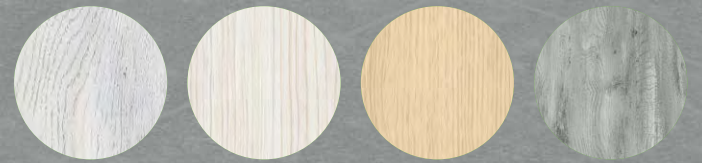
## KN-05

### Özellikler

TR	<b>Arka Duvar</b>	: Yarım boy ayna
	<b>Tavan</b>	: Lazer kesim paslanmaz
	<b>Taban</b>	: PVC
	<b>Aksesuarlar</b>	: Ayna paslanmaz
	<b>Yan Duvar</b>	: Laminant Kaplama

### Properties

EN	<b>Back Wall</b>	: Half length mirror
	<b>Ceiling</b>	: Laser cutting stainless
	<b>Floor</b>	: PVC
	<b>Accessories</b>	: Mirror stainless
	<b>Side Wall</b>	: Laminate coating



**byKAN**  
ELEVATOR





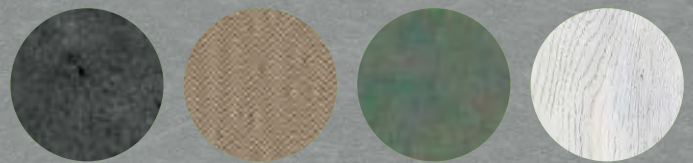
## KN-06

### Özellikler

TR	<b>Arka Duvar</b>	: Tam boy ayna
	<b>Tavan</b>	: Lazer kesim paslanmaz
	<b>Taban</b>	: PVC
	<b>Aksesuarlar</b>	: Ayna paslanmaz
	<b>Yan Duvar</b>	: Dekoratif sarı paslanmaz

### Properties

EN	<b>Back Wall</b>	: Full length mirror
	<b>Ceiling</b>	: Laser cutting stainless
	<b>Floor</b>	: PVC
	<b>Accessories</b>	: Mirror stainless
	<b>Side Wall</b>	: Decorative gold stainless

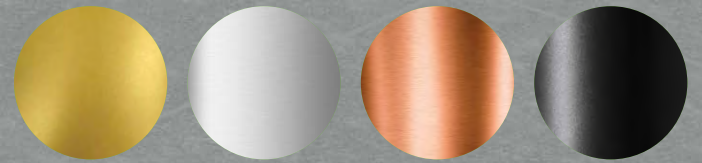


**byKAN**  
ELEVATOR





## KN-07



### Özellikler

TR	<b>Arka Duvar</b>	: Tam boy ayna
	<b>Tavan</b>	: Lazer kesim paslanmaz
	<b>Taban</b>	: Star galaxy granit
	<b>Aksesuarlar</b>	: Siyah ayna paslanmaz
	<b>Yan Duvar</b>	: Siyah Satine Paslanmaz

### Properties

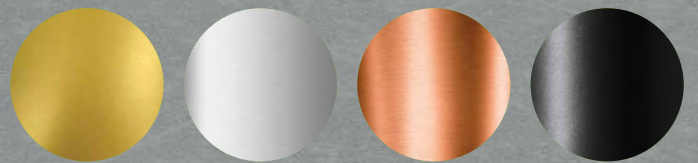
EN	<b>Back Wall</b>	: Full length mirror
	<b>Ceiling</b>	: Lazer cutting stainless
	<b>Floor</b>	: Star galaxy granite
	<b>Accessories</b>	: Black mirror stainless
	<b>Side Wall</b>	: Black hairline stainless

**byKAN**  
ELEVATOR





## KN-08



### Özellikler

TR	<b>Arka Duvar</b>	: Yarım boy ayna
	<b>Tavan</b>	: Lazer kesim paslanmaz
	<b>Taban</b>	: PVC
	<b>Aksesuarlar</b>	: Siyah Ayna paslanmaz
	<b>Yan Duvar</b>	: Dekoratif lake paslanmaz

### Properties

EN	<b>Back Wall</b>	: Half length mirror
	<b>Ceiling</b>	: Laser cutting stainless
	<b>Floor</b>	: PVC
	<b>Accessories</b>	: Black mirror stainless
	<b>Side Wall</b>	: Decorative lacquered stainless

**byKAN**  
ELEVATOR





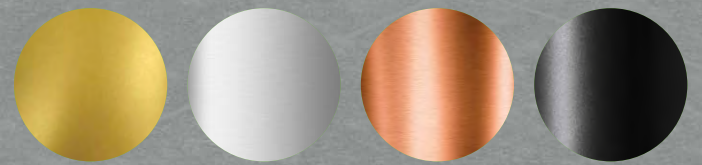
## KN-09

### Özellikler

TR	<b>Arka Duvar</b>	: Yarım boy ayna
	<b>Tavan</b>	: Lazer kesim paslanmaz
	<b>Taban</b>	: Granit
	<b>Aksesuarlar</b>	: Ayna paslanmaz
	<b>Yan Duvar</b>	: Satine paslanmaz

### Properties

EN	<b>Back Wall</b>	: Half length mirror
	<b>Ceiling</b>	: Laser cutting stainless
	<b>Floor</b>	: Granite
	<b>Accessories</b>	: Mirror stainless
	<b>Side Wall</b>	: Hairline stainless

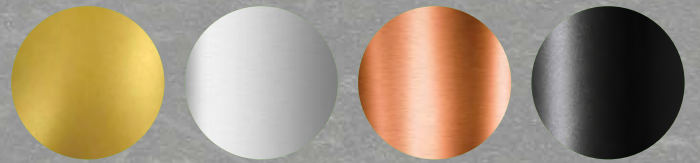


**byKAN**  
ELEVATOR





## KN-10



### Özellikler | Properties

TR	<b>Arka Duvar</b> : Satine Paslanmaz
	<b>Tavan</b> : Lazer kesim paslanmaz
	<b>Taban</b> : Granit
	<b>Aksesuarlar</b> : Laminant kaplama
	<b>Yan Duvar</b> : Satine Paslanmaz

EN	<b>Back Wall</b> : Hairline stainless
	<b>Ceiling</b> : Laser cutting stainless
	<b>Floor</b> : Granite
	<b>Accessories</b> : laminate coating
	<b>Side Wall</b> : Hairline stainless steel

**byKAN**  
ELEVATOR





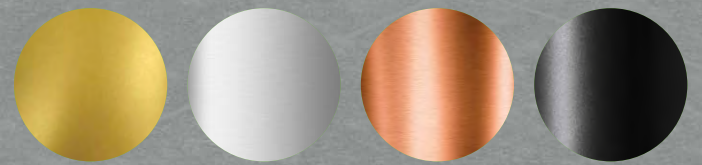
## KN-11

### Özellikler

TR	<b>Arka Duvar</b> : Yarım boy ayna
	<b>Tavan</b> : Lazer kesim paslanmaz
	<b>Taban</b> : Granit
	<b>Aksesuarlar</b> : Ayna paslanmaz
	<b>Yan Duvar</b> : Cam Kaplama

### Properties

EN	<b>Back Wall</b> : Half length mirror
	<b>Ceiling</b> : Lazer cutting stainless
	<b>Floor</b> : Granite
	<b>Accessories</b> : Mirror stainless
	<b>Side Wall</b> : Glass coating



**byKAN**  
ELEVATOR





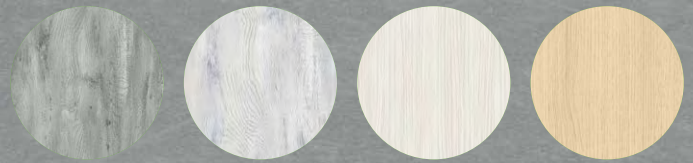
## KN-12

### Özellikler

TR	<b>Arka Duvar</b>	: Tam boy ayna
	<b>Tavan</b>	: Lazer kesim paslanmaz
	<b>Taban</b>	: Granit
	<b>Aksesuarlar</b>	: Sarı ayna paslanmaz
	<b>Yan Duvar</b>	: Temperli cam

### Properties

EN	<b>Back Wall</b>	: Full length mirror
	<b>Ceiling</b>	: Laser cutting stainless
	<b>Floor</b>	: Granite
	<b>Accessories</b>	: Gold mirror stainless
	<b>Side Wall</b>	: Tempered glass



**byKAN**  
ELEVATOR





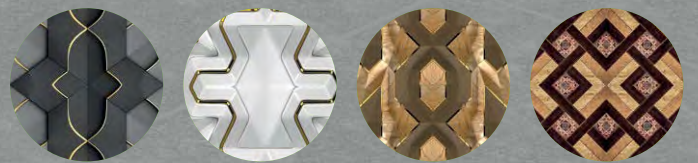
## KN-13

### Özellikler

- TR Arka Duvar** : Tam boy ayna  
**Tavan** : Lazer kesim paslanmaz  
**Taban** : Star galaxy granit  
**Aksesuarlar** : Bakır ayna paslanmaz  
**Yan Duvar** : Bakır satine paslanmaz

### Properties

- EN Back Wall** : Full length mirror  
**Ceiling** : Lazer cutting stainless  
**Floor** : Star galaxy granite  
**Accessories** : Copper mirror stainless  
**Side Wall** : Copper hairline stainless



**byKAN**  
ELEVATOR





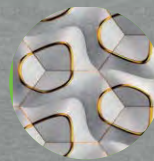
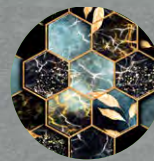
## KN-14

### Özellikler

TR	<b>Arka Duvar</b>	: Tam boy ayna
	<b>Tavan</b>	: Lazer kesim paslanmaz
	<b>Taban</b>	: Cam
	<b>Aksesuarlar</b>	: Sarı ayna paslanmaz
	<b>Yan Duvar</b>	: Cam kaplama

### Properties

EN	<b>Back Wall</b>	: Full length mirror
	<b>Ceiling</b>	: Laser cutting stainless
	<b>Floor</b>	: Glass
	<b>Accessories</b>	: Gold mirror stainless
	<b>Side Wall</b>	: Glass coating

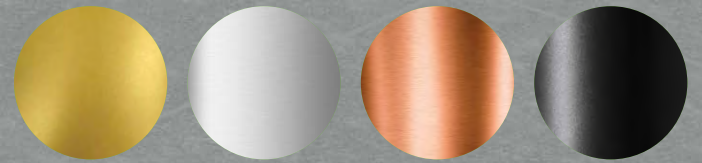


**byKAN**  
ELEVATOR





## KN-15



### Özellikler

TR	<b>Arka Duvar</b>	: Yarım boy ayna
	<b>Tavan</b>	: Lazer kesim paslanmaz
	<b>Taban</b>	: PVC
	<b>Aksesuarlar</b>	: Ayna paslanmaz
	<b>Yan Duvar</b>	: ESB boya

### Properties

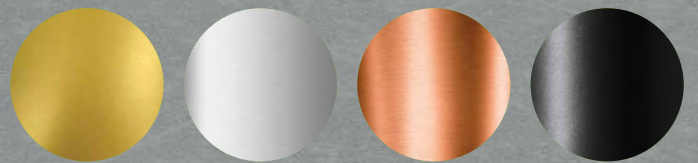
EN	<b>Back Wall</b>	: Half length mirror
	<b>Ceiling</b>	: Laser cutting stainless
	<b>Floor</b>	: PVC
	<b>Accessories</b>	: Mirror stainless
	<b>Side Wall</b>	: ESB ral paint

**byKAN**  
ELEVATOR





## KN-16



### Özellikler

TR	<b>Arka Duvar</b> : Yarım boy ayna
	<b>Tavan</b> : Lazer kesim paslanmaz
	<b>Taban</b> : PVC
	<b>Aksesuarlar</b> : Ayna paslanmaz
	<b>Yan Duvar</b> : ESB boya

### Properties

EN	<b>Back Wall</b> : Half length mirror
	<b>Ceiling</b> : Laser cutting stainless
	<b>Floor</b> : PVC
	<b>Accessories</b> : Mirror stainless
	<b>Side Wall</b> : ESB ral paint

**byKAN**  
ELEVATOR





### **ÖZELLİKLER**

Hastane ulaşım verimliliğini önemli ölçüde iyileştirmek için verimli, güvenli ve güvenilir hastane ve yük asansörlerini özel olarak tasarlamaktadır.

### **PROPERTIES**

Efficient, safe to significantly improve hospital transportation efficiency and reliable hospital and freight elevators specifically is designing.



# Freight Cabin

## Yük Kabini

### **ÖZELLİKLER**

1,5 mm galvanizli sac  
E.S. Boyalı yan duvarlar  
Satine paslanmaz yan duvarlar  
Lazer tavan  
Kolay takılabilir küpeşte  
Aydınlatma ve havalandırma bağlantıları  
Alüminyum çeta taban  
Farklı taban seçenekleri  
Tercihe bağlı sandık ambalaj  
Titreşimi önleyen özel bükümler ve takozlar.

### **PROPERTIES**

1.5 mm galvanized iron sheet  
E.S. Painted side walls  
Satine stainless side walls  
Laser ceiling  
Easy assembly of handrail  
Lighting and ventilation connections  
Aluminium knurled ceta base  
Different base options  
Optional packing crate  
Special bends and dampers that prevent vibration.





# Round Panoramic Cabin

## Oval Panoramik Kabin



### **ÖZELLİKLER**

- 1,5 mm sac kabin duvarları
- 304 kalite paslanmaz çelik
- Hem iç hem dış paslanmaz kaplama
- Tamamı lazer kesimli parçalar
- Üç cepheye kadar cam seçeneği
- Farklı taban ve tavan seçenekleri
- Oval cam seçeneği
- Lamine cam koruma sertifikalı

### **FEATURES**

- *1,5 mm sheet metal cabin wall*
- *AISI304 quality stainless steel*
- *Both internal and external stainless coating*
- *All parts are laser cut*
- *Easy assembly structure*
- *Certified rounded laminated glass*
- *Different floor and ceiling options*
- *Special applications made on request*



# Square Panoramic Cabin

Kare Panoramik Kabin

byKAN  
ELEVATOR

## **ÖZELLİKLER**

Panoramic asansör serisi ürünleri estetiği, ileri teknolojiyi ve sanat konseptini birleştirir. Tasarımı ve performansı ile alışveriş merkezleri, otel ve turizm merkezlerinin yaygın kullanımı için tercih edilen dikey ulaşım çözümü olmaktadır.

## **PROPERTIES**

*Panoramic lift series products combine aesthetics, advanced technology and art concept. With its design and performance, it is the preferred vertical transportation solution for the widespread use of shopping centers, hotels and tourism centers.*









# Platform For Disabled People

Engelli Asansörü





Cam | Glass



KN-101



KN-102



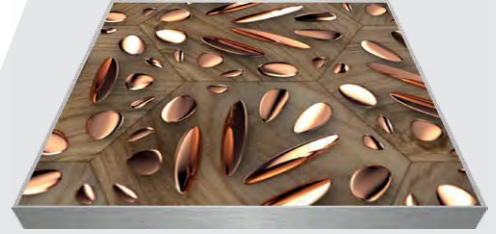
KN-103



KN-104



KN-105



KN-106



KN-107



KN-108



KN-109

Granit | Granite



KN-110



KN-111



KN-112



KN-113



KN-114



KN-115



KN-116



KN-117



KN-118

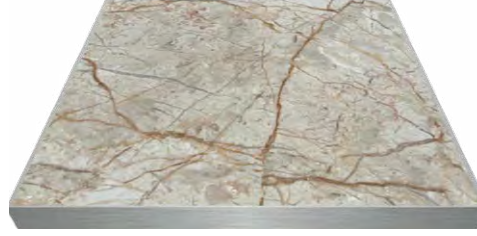


# Floor Options

Taban Seçenekleri



KN-119



KN-120



KN-121

PVC | PVC



KN-122



KN-123



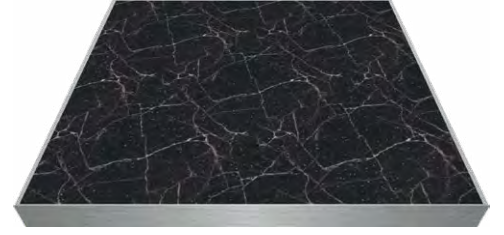
KN-124



KN-125



KN-126



KN-127



KN-128



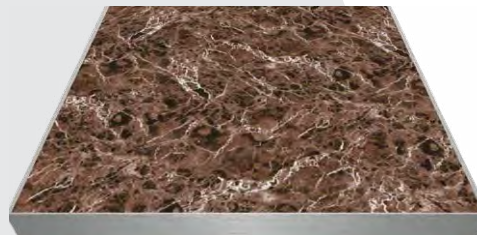
KN-129



KN-130



KN-131



KN-132



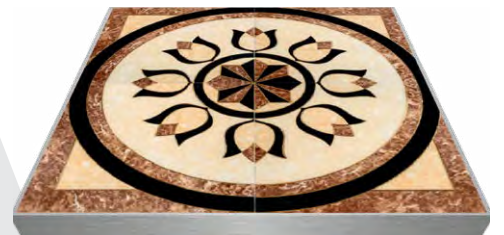
KN-133



KN-134



KN-135



KN-136

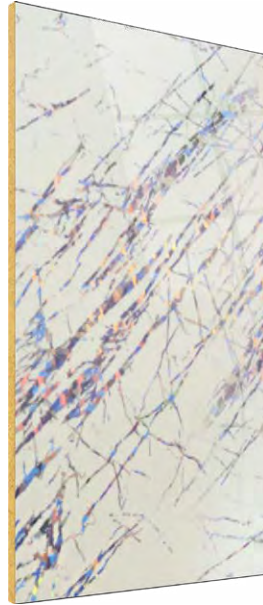




105 P



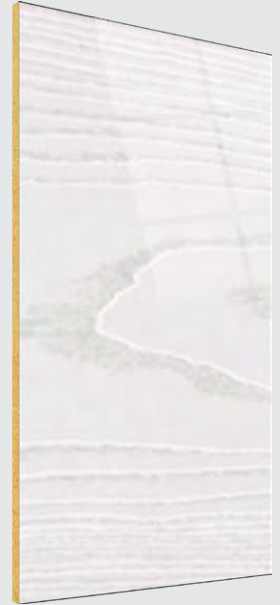
106 P



610 P



612 P



248 B



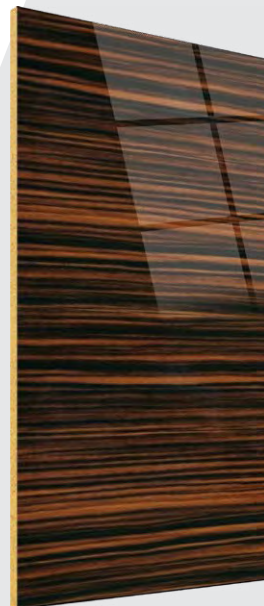
250 B



252 B



065 B



073 P



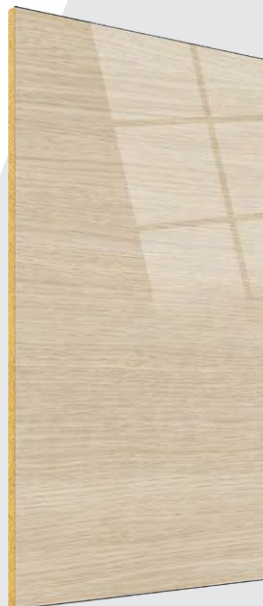
076 P



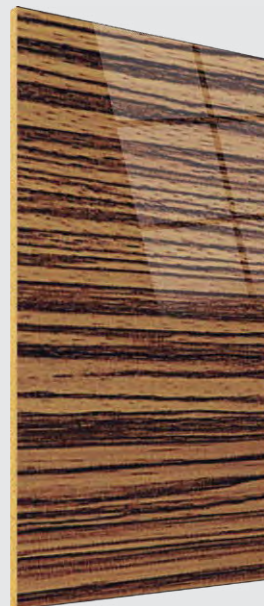
085 P



093 P



4208



4267



4428



# Glass and MDF Coating

Cam ve MDF Kaplama



DCM-460



DCM-470



DCM-480



DCM-490



DCM-500



DCM-510



DCM-520



DCM-530



DCM-540



DCM-550



DCM-560



DCM-570



DCM-580

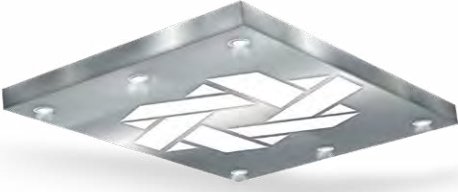


DCM-590



DCM-600





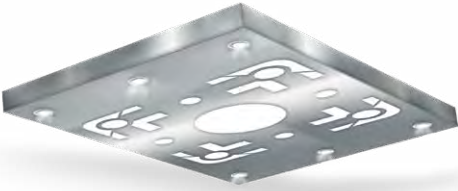
KN-201



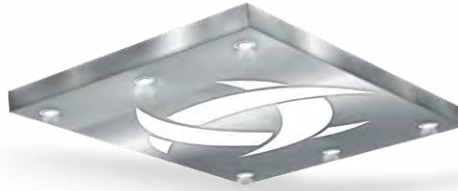
KN-202



KN-203



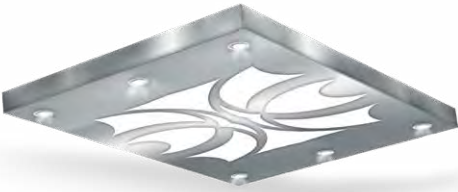
KN-204



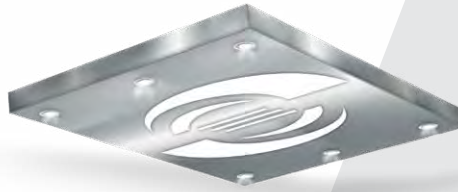
KN-205



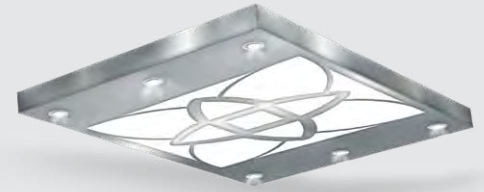
KN-206



KN-207



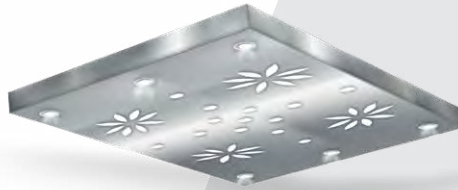
KN-208



KN-209



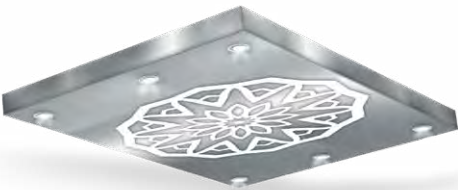
KN-210



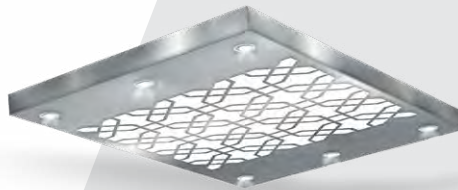
KN-211



KN-212



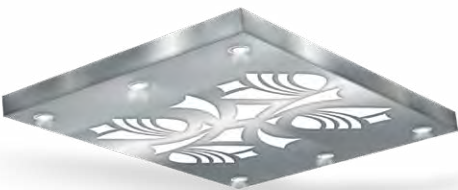
KN-213



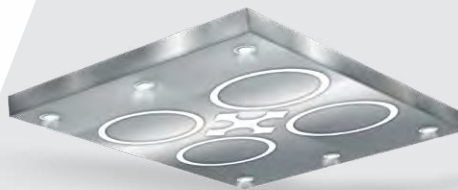
KN-214



KN-215



KN-216



KN-217



KN-218



# Ceiling Options

Tavan Seçenekleri



KN-219



KN-220



KN-221



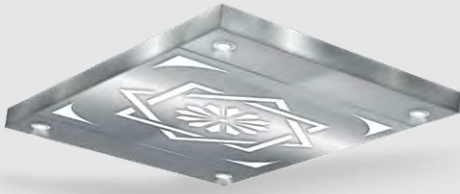
KN-222



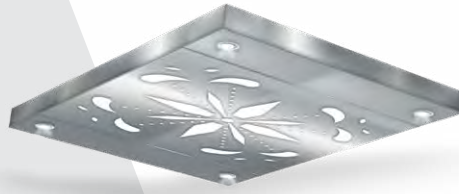
KN-223



KN-224



KN-225



KN-226



KN-227



KN-228



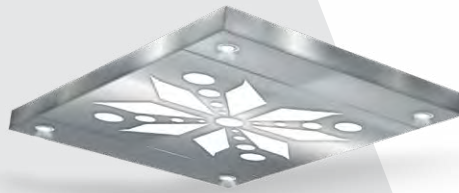
KN-229



KN-230



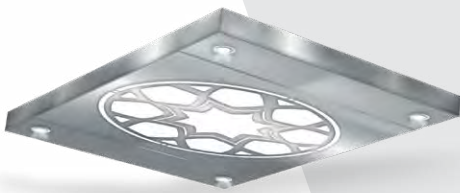
KN-231



KN-232



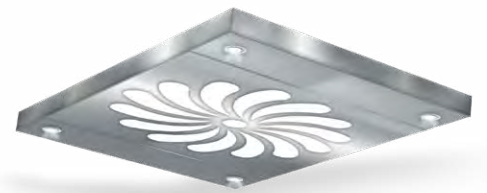
KN-233



KN-234



KN-235



KN-236





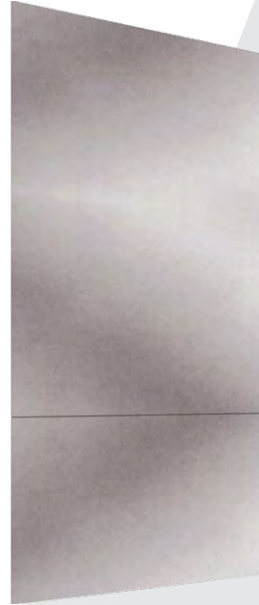
KN-501



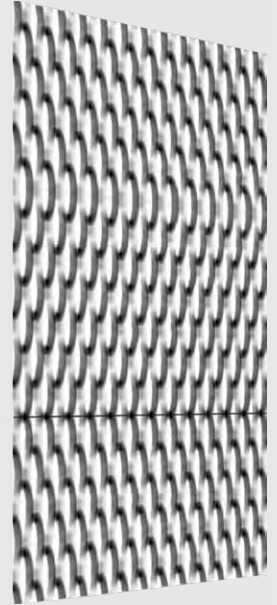
KN-502



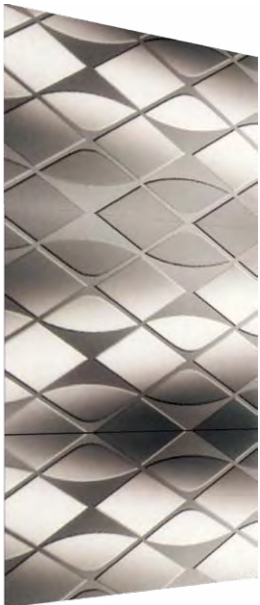
KN-503



KN-504



KN-505



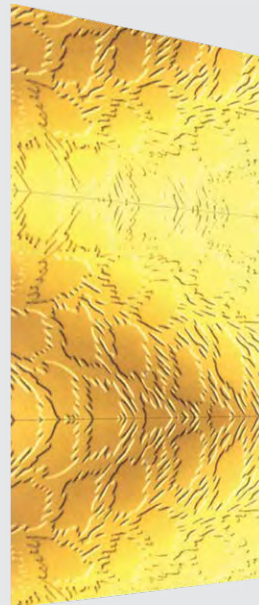
KN-506



KN-507



KN-508



KN-509



KN-510



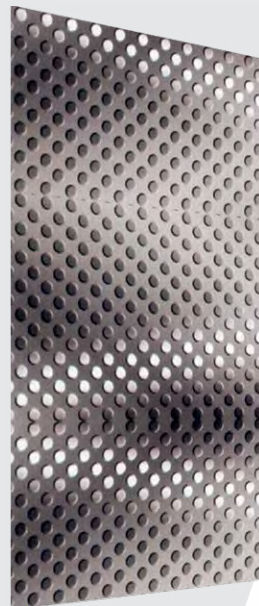
KN-511



KN-512



KN-513



KN-514



KN-515



# Decostyle Stainless

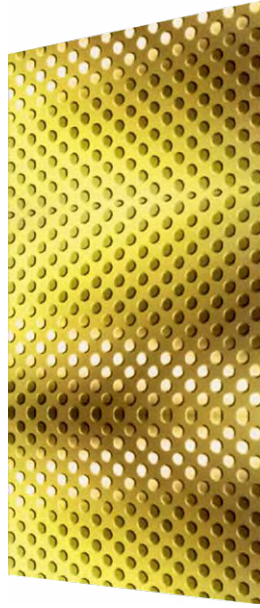
Dekoratif Paslanmaz



KN-516



KN-517



KN-518



KN-519



KN-520



KN-521



KN-522



KN-523



KN-524



KN-525



KN-5256



KN-527



KN-528



KN-529



KN-530



# ASANSÖR KONTROL SİSTEMLERİ

## LIFT CONTROL SYSTEMS





# Control Panels

Kumanda Panoları



**Dişisiz Pano**  
Gearless Control Panel



**Dişili Pano**  
Geared Control Panel



**Revizyon Kutusu**  
Revision Box





**Dişlisiz Pano**  
Gearless Control Panel



**Dişli Pano**  
Geared Control Panel



**Revizyon Kutusu**  
Revision Box





# Control Panels

Kumanda Panoları

**Dişlisiz Pano**  
Gearless Control Panel

**Dişlili Pano**  
Geared Control Panel

**Revizyon Kutusu**  
Revision Box







**Merkezi 2 Panel  
Kat Kapısı**  
Central Opening 2 Panel  
Landing Door



**Merkezi 2 Panel  
Kabin Kapısı**  
Central Opening 2 Panel  
Cabin Door



# Automatic Doors

Otomatik Kapılar

Teleskopik 2 Panel  
Kat Kapısı  
Telescopic 2 Panel  
Landing Door



Teleskopik 2 Panel  
Kabin Kapısı  
Telescopic 2 Panel  
Cabin Door







KN-301



KN-302



KN-303



KN-304



KN-305



KN-306



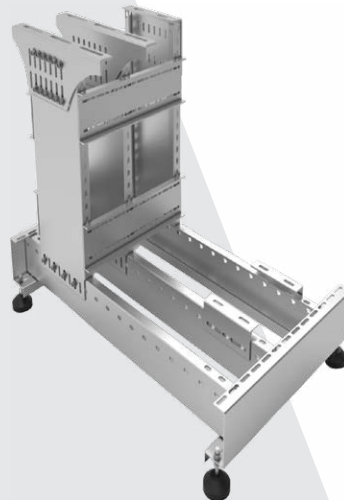
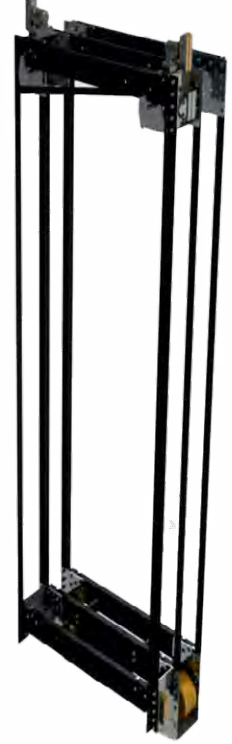
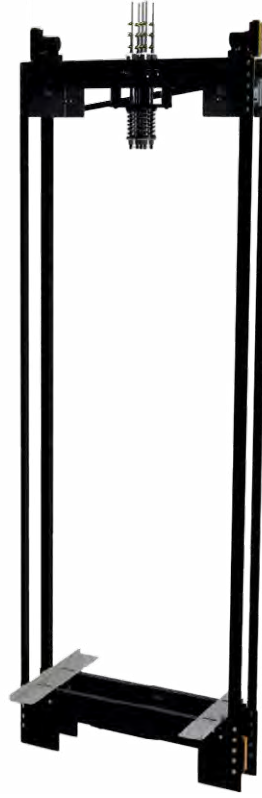
KN-307



# Car Frame & Counter Weight Frame

## Machine Frame

Süspansiyon ve Şaseler







*AKIS -ZF82*



*EKER STRONG 7.5 KW*



*AKIS AK-2*



*VOLPIV2X*



*QUIET-3*



*STRONG LITE 7.5 KW*



# Machine Engine

Makine Motor



*GEM-WTD-2*



*GEM-WTD-1*



*GEM-135B*



*GEM-140D*



*ALBERTO SASSI-S38*



*ALBERTO SASSI-MODY*



*ALBERTO SASSI-TORO*



*ALBERTO SASSI-G200-T1*



*SICOR-SV480*



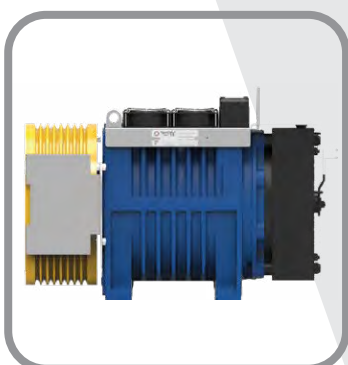
*SICOR-S2V1250*



*SICOR-SMRL480*



*SICOR-VS630*



*MONTANARI-MGV34M*



*MONTANARI-MGV25S*



*MONTANARI-M83*



*MONTANARI-M85*





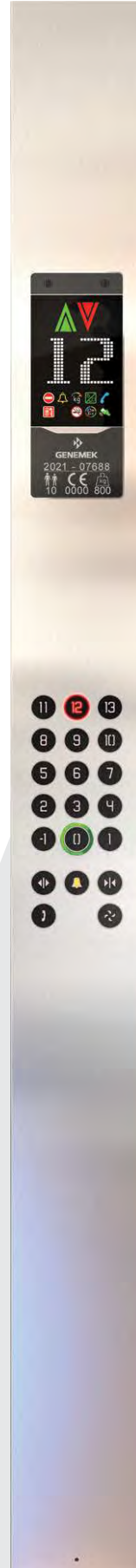
U21TM0002



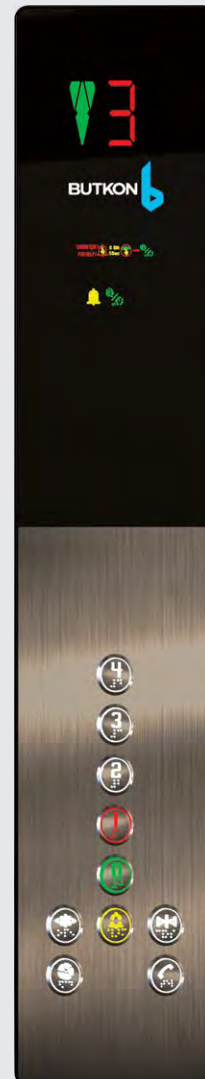
U31TM0001



SGN2000SM



932-MEGA7V-DM



GALAXY



PENTA



# Buttons Butonlar



KN-400



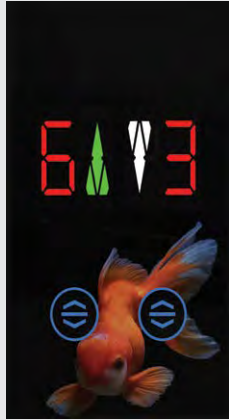
KN-401



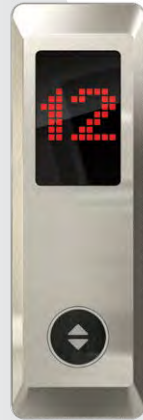
KN-402



KN-403



KN-404



KN-405



KN-406



KN-407



KN-408



KN-409



KN-410



KN-411



KN-412



KN-413



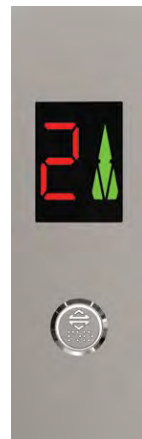
KN-414



KN-415



KN-416



KN-417



KN-418



KN-419



KN-420



KN-421



KN-422



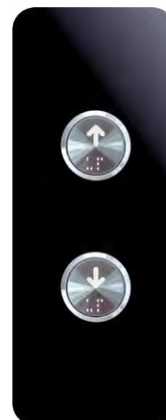
KN-423



KN-424



KN-425

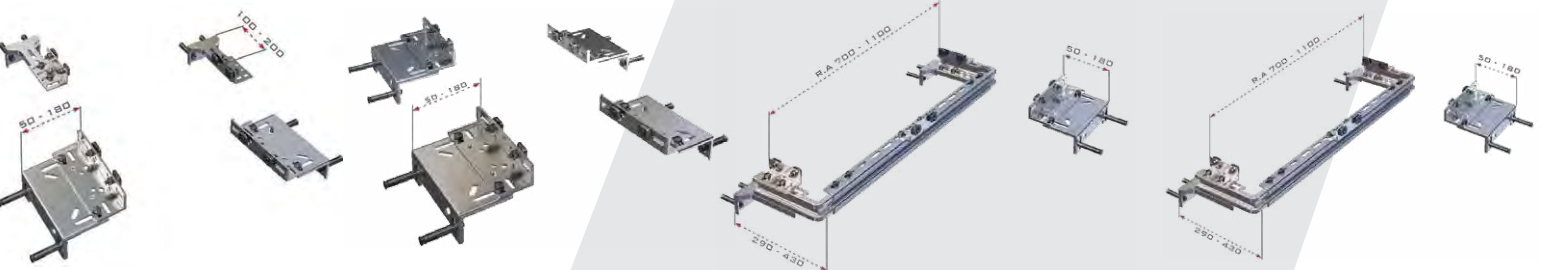
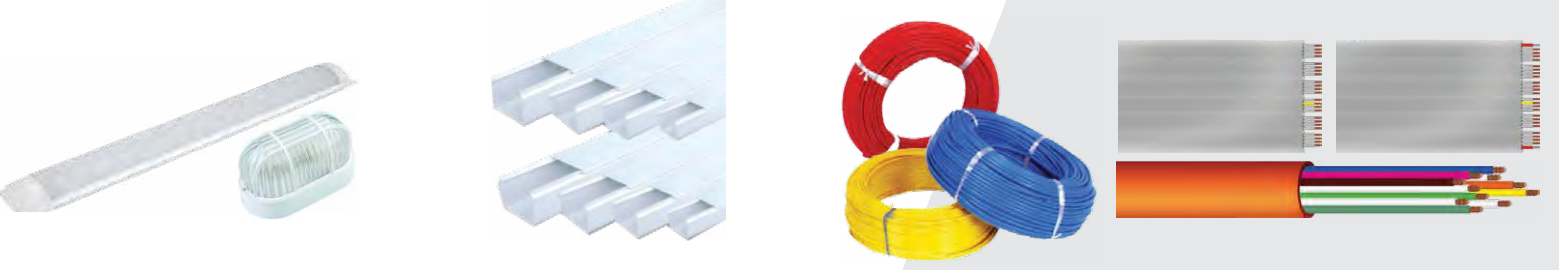


KN-426



KN-427







# Elevator Equipments

Asansör Ekipmanları





## İnsan Asansörleri (Sınıf I-II) Fonksiyonel Boyutlar / Passenger Elevators (Class I-II) Functional Dimensions

				KONUTLAR / HOUSES				İŞYERLERİ / OFFICES					
<b>TAŞIMA KAPASİTESİ</b>			(Kg)	320	400	630	1000	630	800	1000	1250	1600	
<b>ANMA YÜKÜ / NOMINAL LOAD</b>			(Kişi)	4	5	8	13	8	10	13	16	21	
<b>KABİN ALANI / CABIN SPACE</b>			(min)	0,79	0,98	1,45	2,15	1,45	1,73	2,15	2,57	3,245	
			(max)	0,95	1,17	1,66	2,40	1,66	2,00	2,40	2,90	3,56	
<b>KABİN EBATLARI</b> CABIN DIMENSIONS	Genişlik / Width	b1	(mm)	900	1100	1100	1100	1100	1350	1600	1950	1950	
	Derinlik / Depth	d1	(mm)	1000	1000	1400	2100	1400	1400	1400	1400	1750	
	Yükseklik / Height	h4	(mm)	2200	2200	2200	2200	2200	2200	2300	2300	2300	
<b>DURAK KAPILARI</b> LANDING DOORS	Genişlik	b2	(mm)	700	800	800	800	800	800	1100	1100	1100	
	Yükseklik	h3	(mm)	2000	2000	2000	2000	2000	2000	2100	2100	2100	
<b>KUYU EBATLARI</b> SHAFT DIMENSIONS	Genişlik 1*	b3	(mm)	1400	1600	1600	1600						
	Genişlik 2**	b3	(mm)		1800	1800	1800	1800	1900	2400	2600	2600	
	Derinlik	d2	(mm)	1600	1600	1900	2600	2100	2300	2300	2300	2600	
<b>KUYU DİBİ</b> <b>DERİNLİĞİ</b> PIT	0,63m/sn	d3	(mm)	1400	1400	1400	1400	1400	1400	1400	1600	1600	
	1,00m/sn	d3	(mm)	1400	1400	1400	1400	1400	1400	1400	1600	1600	
	1,60m/sn	d3	(mm)		1600	1600	1600	1600	1600	1600	1600	1600	
	2,50m/sn	d3	(mm)			2200	2200		2200	2200	2200	2200	
<b>EN ÜST DURAK</b> <b>SEVİYESİ</b> <b>ÜSTÜNDEKİ</b> <b>YÜKSEKLİK</b> OVERHEAD	0,63m/sn	h1	(mm)	3600	3600	3600	3600	3800	3800	4200	4400	4400	
	1,00m/sn	h1	(mm)	3700	3700	3700	3700	3800	3800	4200	4400	4400	
	1,60m/sn	h1	(mm)	3800	3800	3800	3800	4000	4000	4200	4400	4400	
	2,50m/sn	h1	(mm)			5000	5000		5000	5200	5400	5400	
<b>M</b> <b>A</b> <b>K</b> <b>i</b> <b>A</b> <b>N</b> <b>C</b> <b>A</b> <b>H</b> <b>A</b> <b>D</b> <b>E</b> <b>A</b> <b>R</b> <b>O</b> <b>R</b> <b>E</b> <b>M</b> <b>S</b> <b>i</b>	<b>ALAN</b> SPACE	0,63m/sn	A	(m <sup>2</sup> )	6	7,5	10	12	15	15	20	22	25
		1,00m/sn	A	(m <sup>2</sup> )	6	7,5	10	12	15	15	20	22	25
		1,60m/sn	A	(m <sup>2</sup> )		10	12	14	15	15	20	22	25
		2,50m/sn	A	(m <sup>2</sup> )			14	16		18	20	22	25
	<b>GENİŞLİK</b> WIDTH	0,63m/sn	h1	(mm)	1600	2200	2200	2400	2500	2500	3200	3200	3200
		1,00m/sn	h1	(mm)	1600	2200	2200	2400	2500	2500	3200	3200	3200
		1,60m/sn	h1	(mm)		2200	2200	2400	2500	2500	3200	3200	3200
		2,50m/sn	h1	(mm)			2800	2800		2800	3200	3200	3200
	<b>DERİNLİK</b> DEPTH	0,63m/sn	d4	(mm)	3000	3200	3700	4200	3700	3700	4900	4900	5500
		1,00m/sn	d4	(mm)	3000	3200	3700	4200	3700	3700	4900	4900	5500
		1,60m/sn	d4	(mm)		3200	3700	4200	3700	3700	4900	4900	5500
		2,50m/sn	d4	(mm)			3700	4200		3700	4900	4900	5500
	<b>YÜKSEKLİK</b> HEIGHT	0,63m/sn	h2	(mm)	2000	2000	2000	2000	2200	2200	2400	2400	2800
		1,00m/sn	h2	(mm)	2000	2000	2000	2000	2200	2200	2400	2400	2800
		1,60m/sn	h2	(mm)		2200	2200	2200	2200	2200	2400	2400	2800
		2,50m/sn	h2	(mm)			2600	2600		2800	2800	2800	2800

\*Sağa veya sola toplanan teleskopik kapılı asansörler için / For telescopic elevators with doors opening to the right and left

\*\*Merkezden açılan kapılı asansörler için / For elevators with central opening

320 ve 400 Kg. taşıma kapasiteli asansörler engelli kişilerin tekerlekli sandalyede asansörü kullanmaları için uygun değildir  
Elevators with a load capacity of 320 and 420 kg are not suitable for use by people with disabilities in a wheelchair



» Zirveye Yükselen Güç...

**byKAN**  
ELEVATOR

Horozluhan Mh. Dr. Sadık Ahmet Cd.  
B blok No: 109 42120 Selçuklu / KONYA / TÜRKİYE  
Telefon: +90 532 169 81 28  
sales@bykanelevator.com - info@bykanelevator.com  
www.bykanelevator.com - www.bykanlift.com